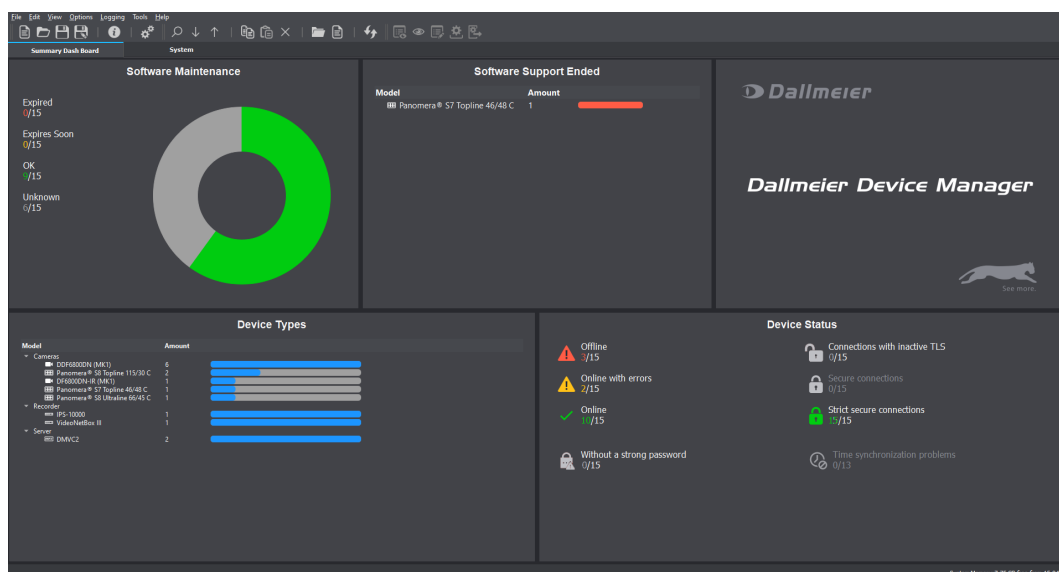


Dallmeier Device Manager

Application for Configuration and Management of VideoIP Systems



Dallmeier Device Manager (DDM) is a powerful application for the convenient configuration and administration of large Dallmeier VideoIP systems. DDM scans the video network for Dallmeier devices, detects them automatically and provides them in an overview. Thus, cameras as well as recording systems can be conveniently managed. The extensive functions range from changing IP addresses and updating the integrated software to opening the configuration dialogs directly.

Network Scan

Dallmeier Device Manager scans the VideoIP network for Dallmeier devices and provides them in an overview, if desired with a preview for cameras and filtered according to various criteria.

Structuring

The independent and simple assignment of the detected recording systems and cameras to different virtual systems allows a clear and structured representation of the entire VideoIP system.

Dashboard

The dashboard shows the most important device data of a system at a glance: Hardware and security status, licenses, software version.

Updates

Software updates for all components present in the network can be carried out with DDM. Devices with identical software versions can be updated simultaneously.

Software Maintenance

The current status of the maintenance license intervals is queried and displayed in a general overview for all devices. Soon expiring licenses are highlighted.

TLS Encryption

DDM provides all the necessary tools to encrypt device connections in a network using the TLS protocol.

Panomera® AutoCalibration

The Panomera® AutoCalibration add-on enables the automatic calibration of Panomera® systems. The individual sensors of the system are optimally aligned against each other by a digital fine alignment of the image section to achieve a seamless overall image.

Further Features

- Compatible with all Dallmeier recording systems
- Compatible with all Panomera® multifocal sensor systems
- Compatible with all Dallmeier network cameras

System Requirements¹⁾

- Operating system Microsoft Windows²⁾ 10 (64 Bit)
- CPU Intel³⁾ Core2Quad 2.66 GHz (or comparable)
- RAM 8 GB
- Ethernet 100/1000 Mbps
- Router / Switch with broadcast support
- Nvidia⁴⁾ graphics card with CUDA 3.0 or 5.0 support (only required with Panomera® AutoCalibration)
- Screen resolution at least 1280 × 800 px, recommended 1920 × 1080 px
- Screen resolution for AutoCalibration at least 1920 × 1080 px

1) These requirements relate to the use of the Panomera® AutoCalibration add-on. If this add-on is not used, workstations with the following or comparable equipment can be employed: Microsoft Windows 10, CPU Intel Core2Duo 2.0GHz, RAM 2GB.
2) Microsoft and Windows are trademarks or registered trademarks of Microsoft Corporation headquartered in Redmond, Washington, USA
3) Intel is a trademark or registered trademark of Intel Corporation headquartered in Santa Clara, California, USA
4) Nvidia is a trademark or registered trademark of Nvidia Corporation headquartered in Santa Clara, California, USA

